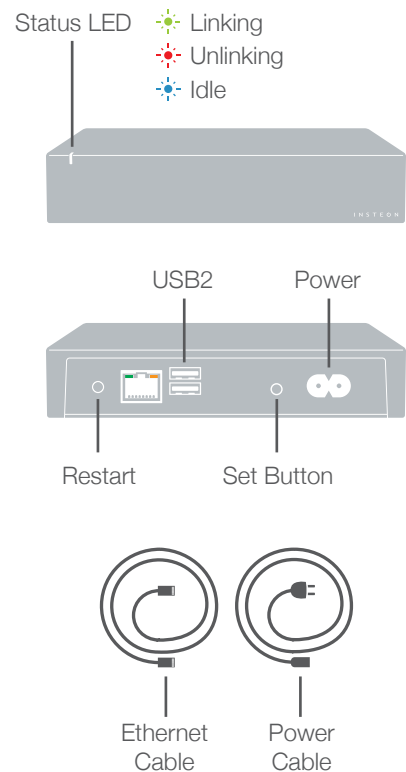


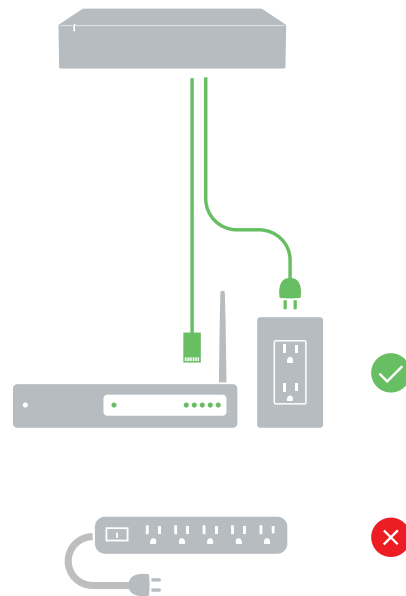


Insteon Hub



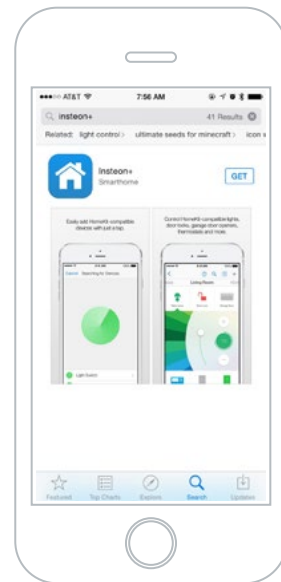
Installation

Connect your Hub to your router and a power outlet using the cables provided. Avoid switched outlets or power strips.



Download the App

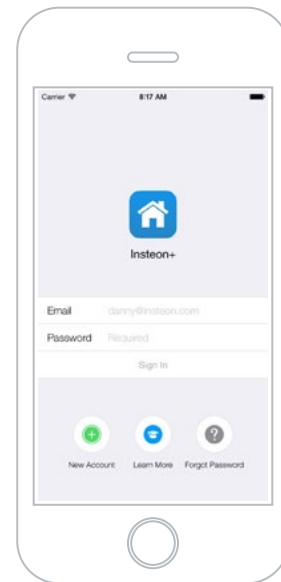
On your iPhone or iPod touch, download and install **Insteon+** from the App Store.



Don't feel like searching? Scan the QR Code and download the app.

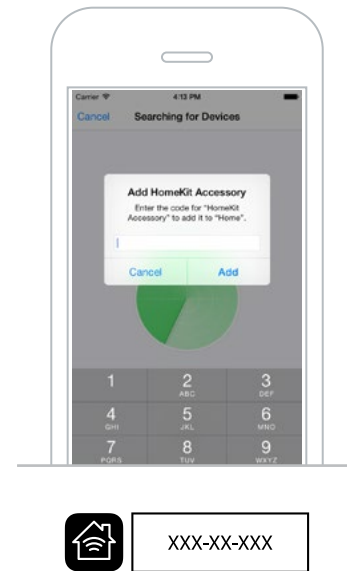
Create an Account

Launch the App and allow Insteon+ access to HomeKit. Follow the on-screen instructions to create an account.



Adding Hub Pro

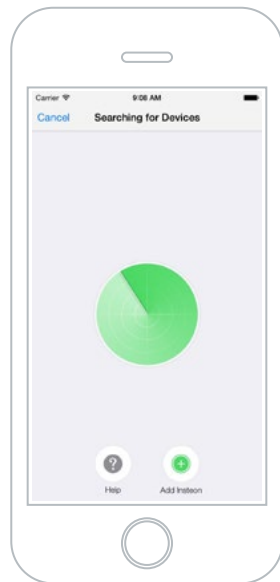
Add HomeKit devices, including the Insteon Hub, by tapping Add. For HomeKit devices, enter the 8-digit Accessory Setup Code.



✓ You're done setting up your Insteon Hub; now start adding devices.

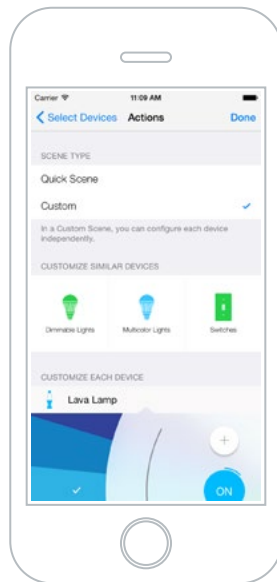
Add an Insteon Device

Add Insteon devices by tapping the Add Insteon button when searching for devices.



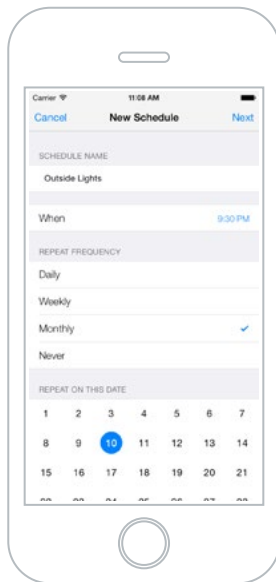
Create a Scene

Control a single light or a group of devices simultaneously. Tap the Add button to create a scene. Control scenes with Siri or from Dashboard.



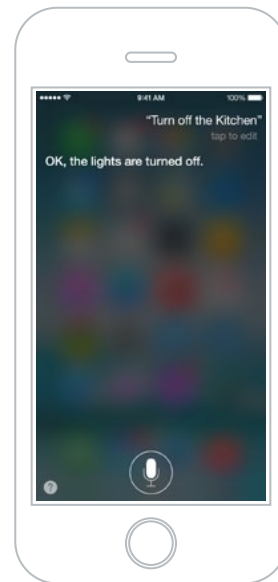
Create a Schedule

Assign a schedule to scenes. Tap the Add button to create a schedule.



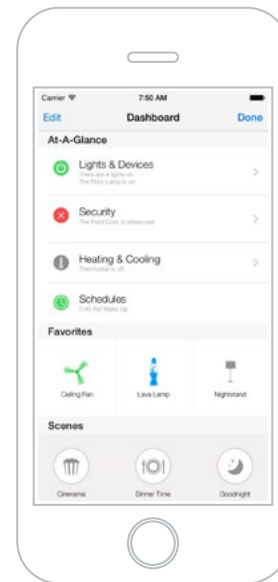
Control with Siri

Ask Siri to control devices in rooms and zones or activate scenes.



Dashboard

Keep an eye on your home with At-a-Glance, control your favorite devices, and activate scenes. Tap the Dashboard button next to Search to open Dashboard.



Remote Access

Remote access requires an Apple TV (3rd generation or later) with Apple TV software 7.0 or later.

