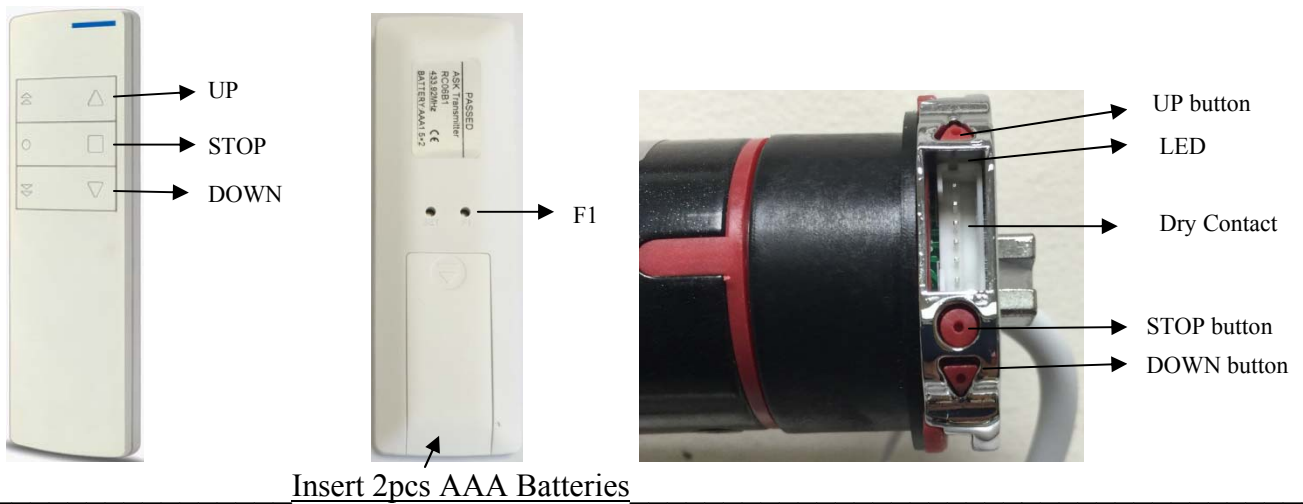
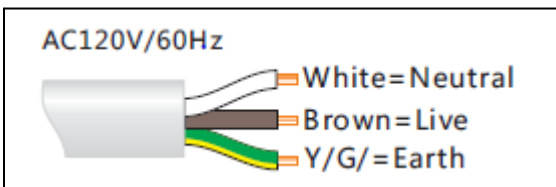


PowerCurtain Roller Shade RL/RM-400 Instructions



Wiring of Power




Assembling

Watch the video

<https://www.youtube.com/watch?v=RHPrltTChlg>

Pairing Remote Control with Motor

Method 1 (use the Motor)

- Press and hold the  until the LED illuminated.
- Press Remote Control "UP" button once, Motor moves slightly. Done.

Method 2 (use Remote Control)

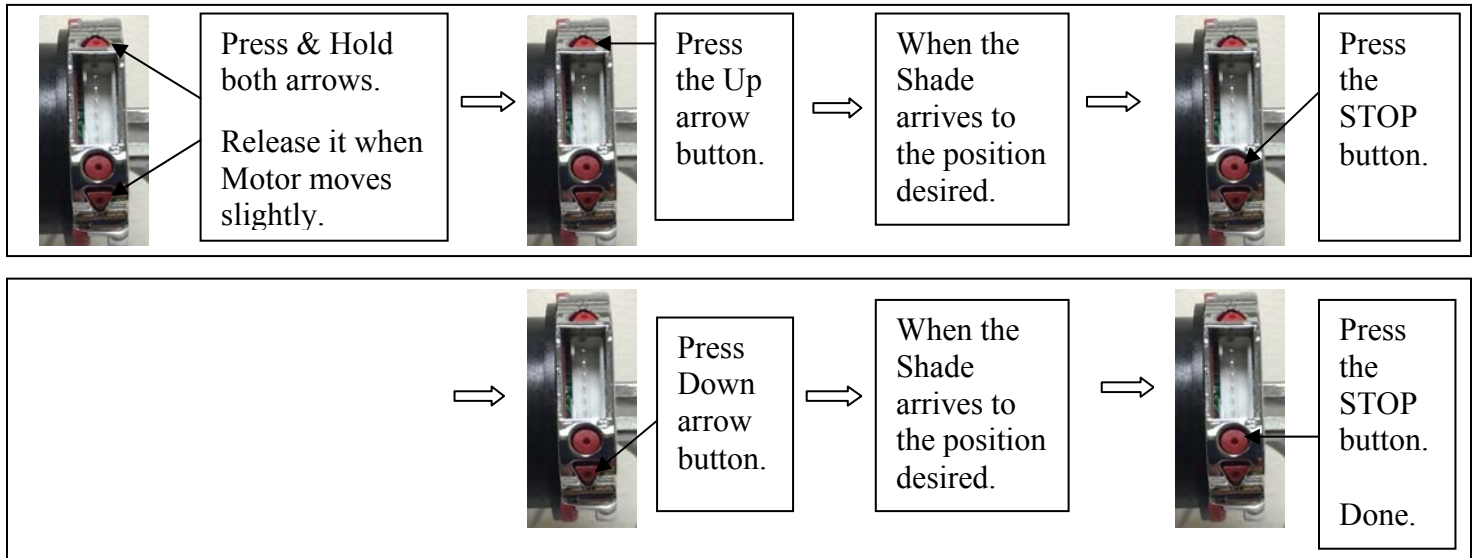
- Within 3 seconds after power is on, quickly press "F1" on the back of Remote Control. Motor moves slightly.
- Press Remote Control "UP" button once.
- Motor moves slightly. Done.

Limit Setting

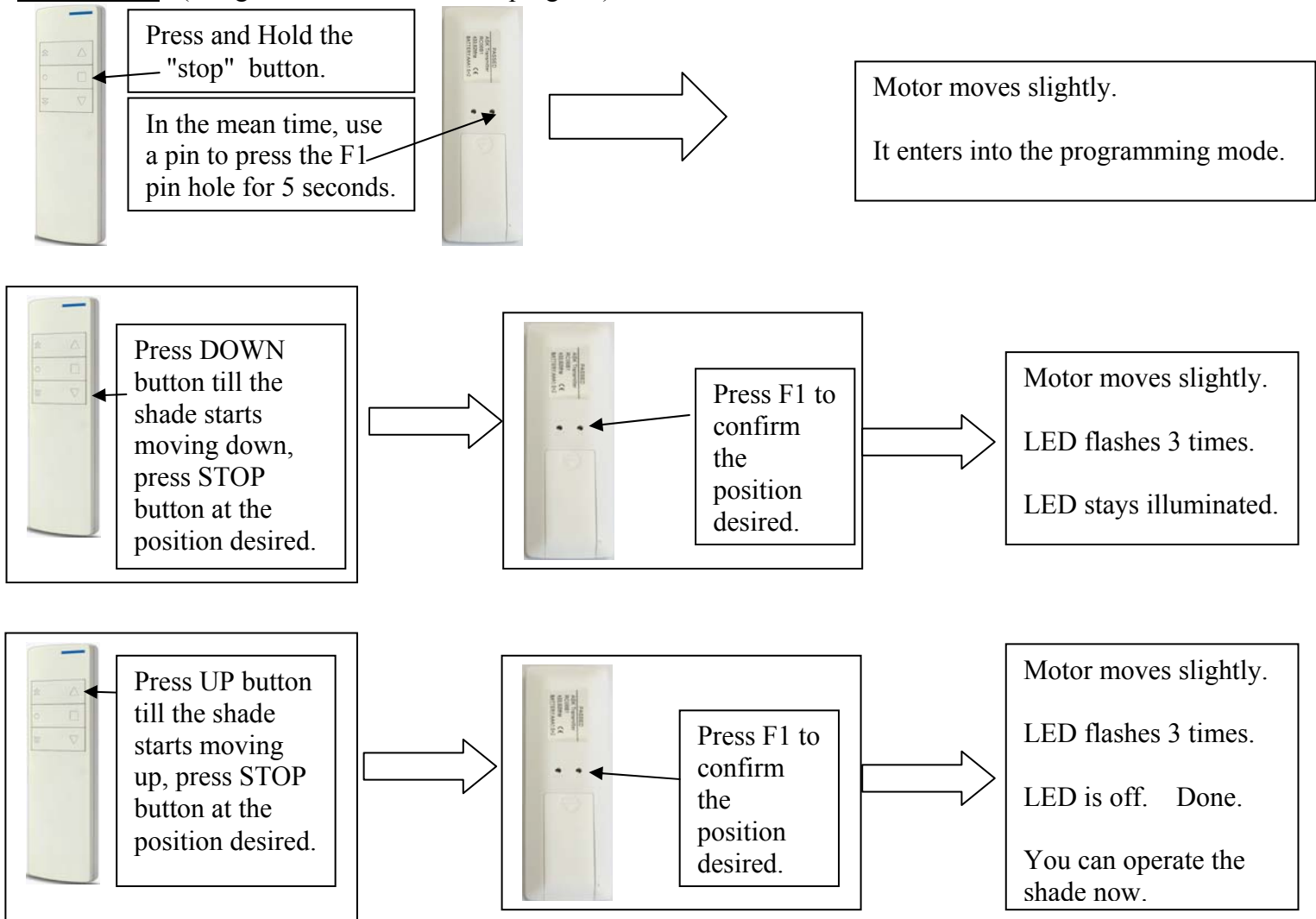
Important Note:

During mounting, please lower the shade down about 1/4 or 1/3 for programming purpose.

Method 1 (using the Motor to program)




Method 2 (using the Remote Control to program)



Reverse Moving Direction



Method 1

- Press and hold the  until the LED illuminated.
- Press Remote Control "DOWN" button once.
- Motor moves slightly. Done.

Method 2

- Within 3 seconds after power is on, press "F1" on the back of Remote Control. Motor moves slightly.
- Press Remote Control "Down" button once.
- Motor moves slightly. Done.

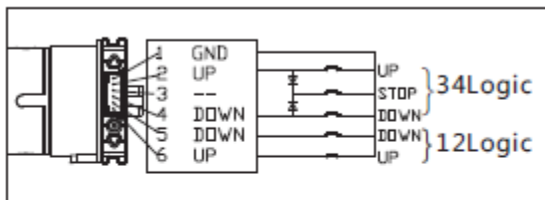
Clearing the limits / codings (Reset the Motor)

- Press and hold the  for a few seconds until the LED illuminated.
- Press again and hold the  until the Motor moves slightly.
- Done.

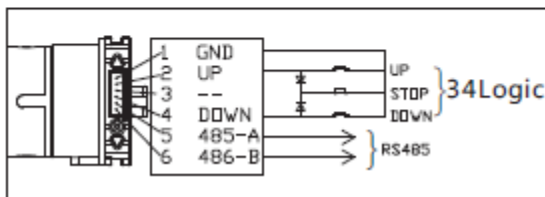
Home Automation Connecting (Contact Closure)

- Dry Contact for Low Voltage Programming

12 Logic and 34logic wiring



34 Logic and Rs485 Wiring



Function of 6P6C

PIN	DESCRIPTION
1	GND
2	CLOSE(34)
3	OPEN/STOP/CLOSE/STOP
4	OPEN(34)
5	CLOSE(12)/RS485-B
6	OPEN(12)/RS485-A

- Attention : 1、 The logic ON is dry contact pulse signal , Duration is 100-200ms
2、 Special instruction of Rs485 should be told prior to production.

Trouble Shooting Guide

S/N	Trouble	Problem	Solution
1	Motor doesn't move or move slowly	A、 No Voltage or insufficient voltage B、 Overload C、 Some accessories is stuck	A、 Check Voltage B、 Get new motor with suitable torque C、 Check the accessories installing
2	Motor doesn't move, or move to single direction or move very little	End of Limit	Re-set the limit
3	Sudden stop of moving	Overheated	Cool about 30 minutes and recover to work.
4	The Fabric is rolling to one side	A、 The Fabric is not well attached to the tube B、 Not well adjust of fabric in tube C、 The Fabric is not well cut	A、 Adjuste the tube and fabric attached B、 Rework to attached the fabric C、 Rework the fabric cutting
5	Move as Dot-Move	Work under Dot-move mode	Shift to normal mode
6	Move to the opposite direction as remote controlling	Reverse moving setting	Correct it by reverse moving setting